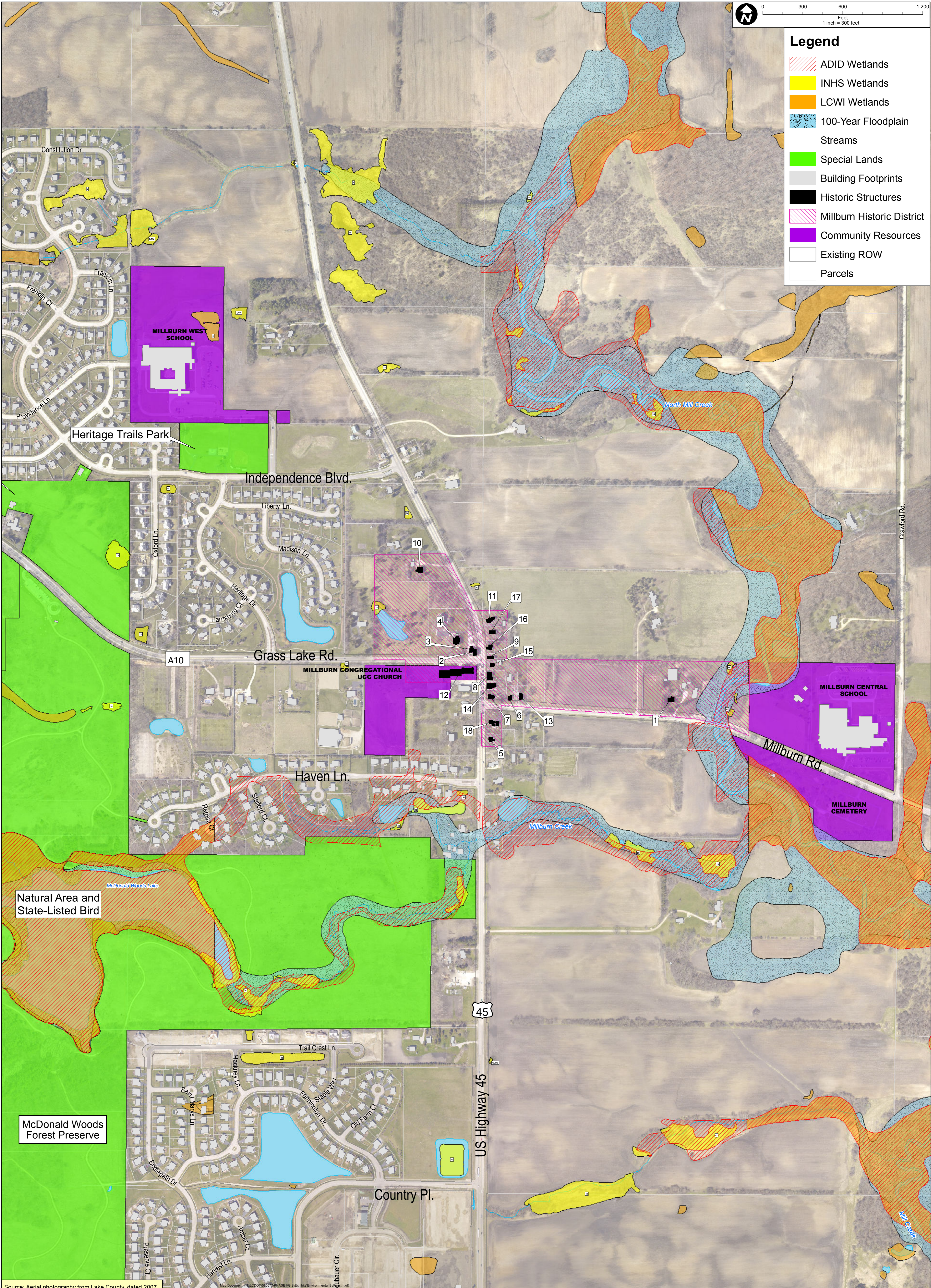


Legend

- ADID Wetlands
- INHS Wetlands
- LCWI Wetlands
- 100-Year Floodplain
- Streams
- Special Lands
- Building Footprints
- Historic Structures
- Millburn Historic District
- Community Resources
- Existing ROW
- Parcels



Source: Aerial photography from Lake County, dated 2007

CHRISTOPHER B. BURKE ENGINEERING LTD.
 9575 West Higgins Road, Suite 600
 Rosemont, Illinois 60018
 (847) 823-0500

PATRICK ENGINEERING

LakeCounty
 Division of Transportation

**US ROUTE 45
 IL RTE 132 TO IL RTE 173**
ENVIRONMENTAL RESOURCES - CORE STUDY AREA